

**High Impact Atlantic Margins Oil and Gas Company**

**June 2019**

These Presentation Materials do not constitute or form part of any invitation, offer for sale or subscription or any solicitation for any offer to buy or subscribe for any securities in the Company nor shall they or any part of them form the basis of or be relied upon in any manner or for any purpose whatsoever.

These Presentation Materials must not be used or relied upon for the purpose of making any investment decision or engaging in an investment activity and any decision in connection with a purchase of shares in the Company must be made solely on the basis of the publicly available information. Accordingly, neither the Company nor its directors makes any representation or warranty in respect of the contents of the Presentation Materials.

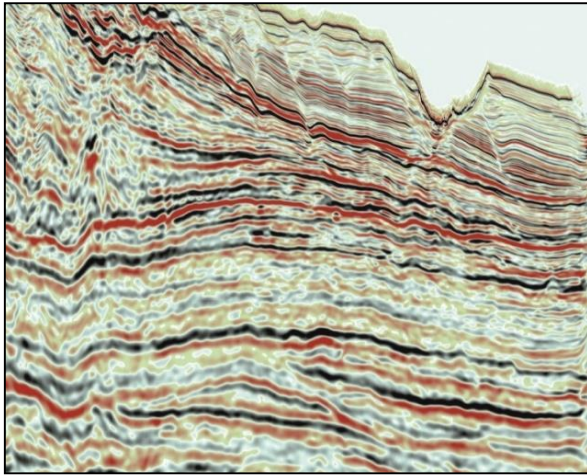
The information contained in the Presentation Materials is subject to amendment, revision and updating in any way without notice or liability to any party. The presentation materials contain forward-looking statements which involve risk and uncertainties and actual results and developments may differ materially from those expressed or implied by these statements depending on a variety of factors. All opinions expressed in these Presentation Materials are those solely of the Company unless otherwise stated. No representation or warranty, express or implied, is made as to the fairness, accuracy or completeness of the information or opinions contained herein, which have not been independently verified. The delivery of these Presentation Materials shall not at any time or in any circumstance create any implication that there has been no adverse change, or any event reasonably likely to involve any adverse change, in the condition (financial or otherwise) of the Company since the date of these Presentation Materials.

The Presentation Materials are confidential and being supplied to you for your own information and may not be reproduced, further distributed, passed on, or the contents otherwise divulged, directly or indirectly, to any other person (except the recipient's professional advisers) or published, in whole or in part, for any purpose whatsoever. The Presentation Materials may not be used for the purpose of an offer or solicitation to subscribe for securities by anyone in any jurisdiction.

**[www.chariotoilandgas.com](http://www.chariotoilandgas.com)**

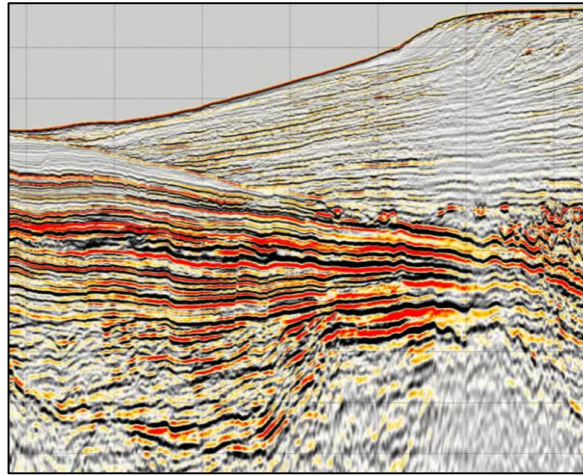


## Brazil



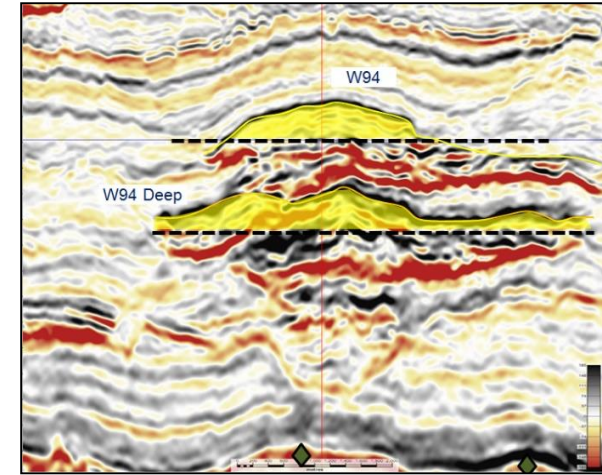
- ☼ Identified large structural prospect with multiple stacked targets from proprietary 3D seismic
- ☼ 7 stacked reservoir targets including drape over a 200km<sup>2</sup> 4-way dip-closed structure, with individual prospective resource ranging up to **366mmbbls\***
- ☼ Single well in Prospect 1 can penetrate **911mmbbls\*** of prospective resource in TP-1, TP-3 and KP-3 targets
- ☼ Partnering process initiated for a partner to join in drilling to follow a play opening commitment well to be drilled by a third-party in the neighbouring deepwater block

## Morocco



- ☼ RSD-1 well indicates the potential for a new petroleum system with migration from a Cretaceous or younger source rock charging Upper Jurassic reservoir quality sandstones and effective seal
- ☼ **MOH-B 637mmbbls\*** is an attribute supported, Upper Jurassic clastic prospect in 400m WD
- ☼ **KEN-A 445mmbbls\*** is an attribute supported, Upper Jurassic clastic prospect in 750m WD
- ☼ SNL-1 is a very large sub-Nappe structural lead in Lixus with the potential for a gas-condensate charge into Jurassic clastics; focus of an extensive seismic reprocessing campaign

## Namibia



- ☼ Prospect S well encountered excellent quality water bearing Cretaceous-aged turbidite reservoir sands
- ☼ Post-well evaluation indicates that the internal source kitchen is immature neighbouring the well
- ☼ *Prospects V & W* access an outboard source kitchen, different to the inboard kitchen required by Prospect S
- ☼ **Prospect V 339mmbbls\*** is a 4-way dip closed trap targeting those sands encountered in the S well
- ☼ **Prospect W 284mmbbls\*** is a 4-way dip closed trap also targeting those sands encountered in the S well

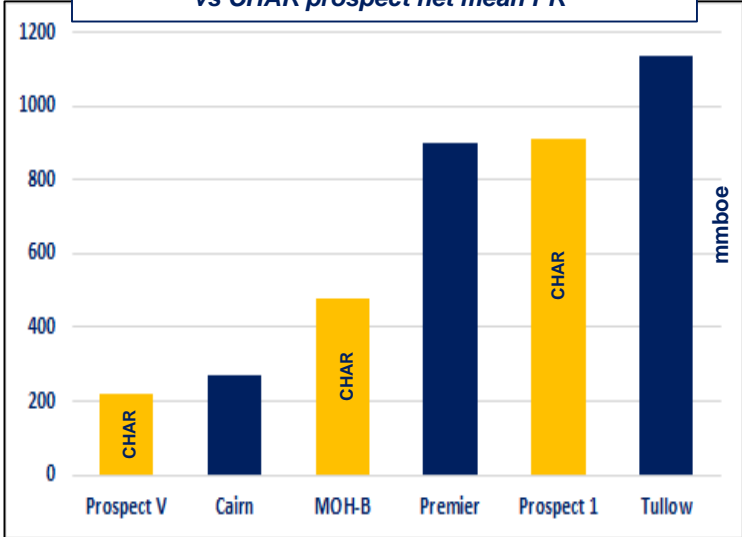
**High impact Atlantic Margins explorer:**

- “Drill-ready” exploration assets in Morocco, Brazil and Namibia
- Success in any of Chariot’s wells has the potential to create transformational value
- Any success de-risks material running room in each licence

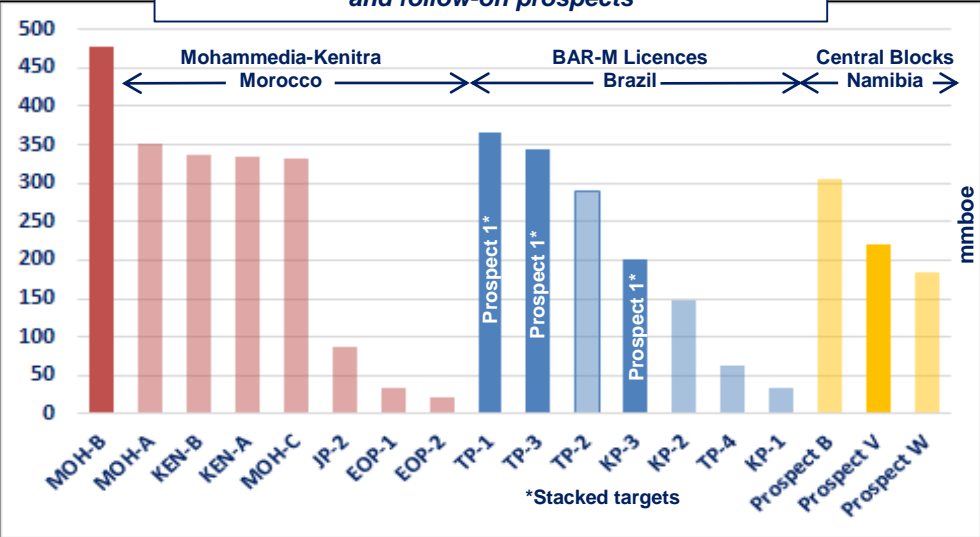
**Clear and focused exploration risk management strategy:**

- Portfolio diversity combined with focus on known geology
- Expert in-house sub-surface team applying state-of-the-art technology with proven operating capability
- Endorsement and risk-sharing through partnering
- Active portfolio management focused on quality
- Strong balance sheet with a track record of capital discipline

Company 2P Reserve & 2C Resource at YE2017 vs CHAR prospect net mean PR\*



CHAR prospect net mean PR\* for drilling inventory and follow-on prospects



\* Netherland Sewell and Associates Inc. (“NSAI”) estimate Gross Mean Prospective Resources

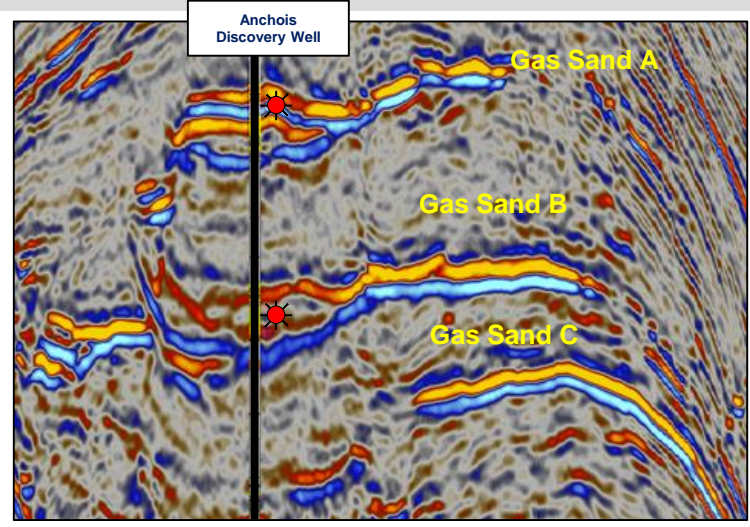
# Anchois - Material, High Value Gas Project

### Key Facts:

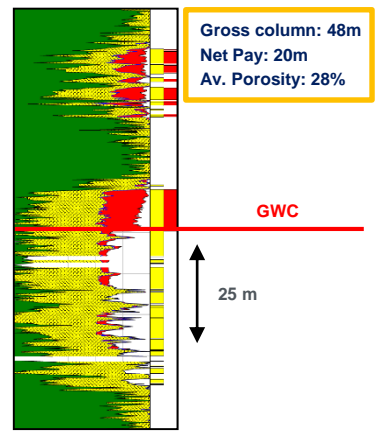
- ☼ Anchois-1 gas discovery in 388 m WD, 40km from coastline
- ☼ 2C Resource of **307 Bcf\*** in Gas Sand A and Gas Sand B
- ☼ Prospective Resource of **116 Bcf\*** in Gas Sand C (Anchois Deep), untested in the well, making an estimated total remaining recoverable resources of **423 Bcf**
- ☼ Excellent quality reservoirs expected to deliver high rate wells
- ☼ Sales quality gas: C1 - 97%; C2 – C4 2%; C5+ - 0.8%

### Work Programme:

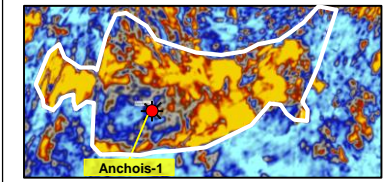
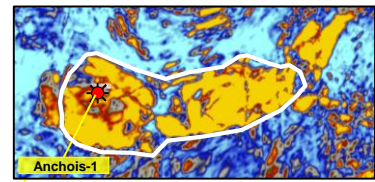
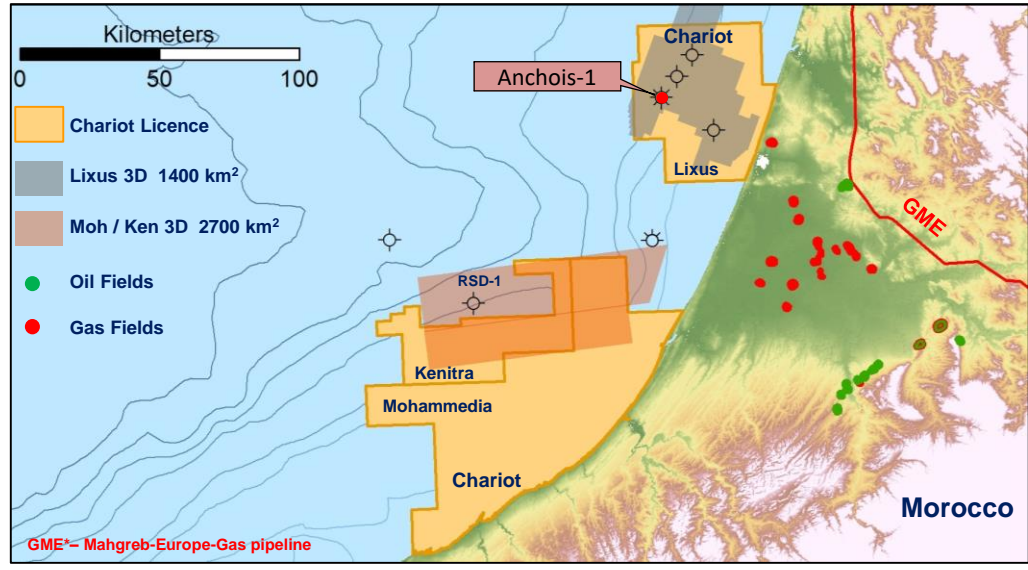
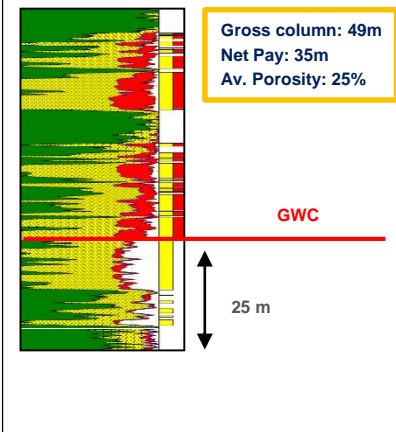
- ☼ 3D reprocessing and re-evaluation of the subsurface
- ☼ Partnering and developing strategic alliances
- ☼ Developing the gas market, testing development concepts
- ☼ Contingent appraisal well, suspended as a potential producer



Gas Sand A



Gas Sand B



\* Netherland Sewell and Associates Inc. ("NSAI") estimate of Gross 2C Resources or unrisks 2U Prospective Resources

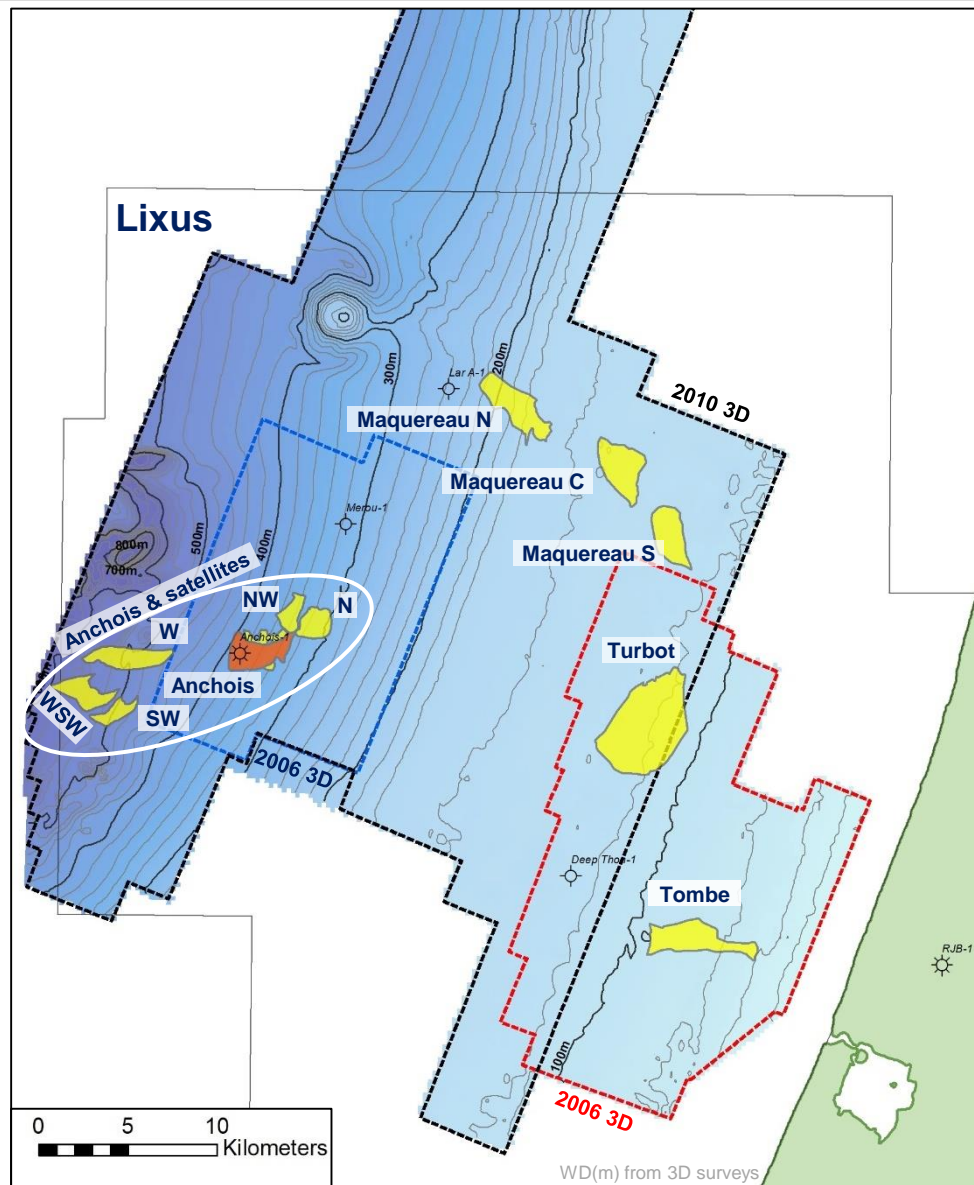
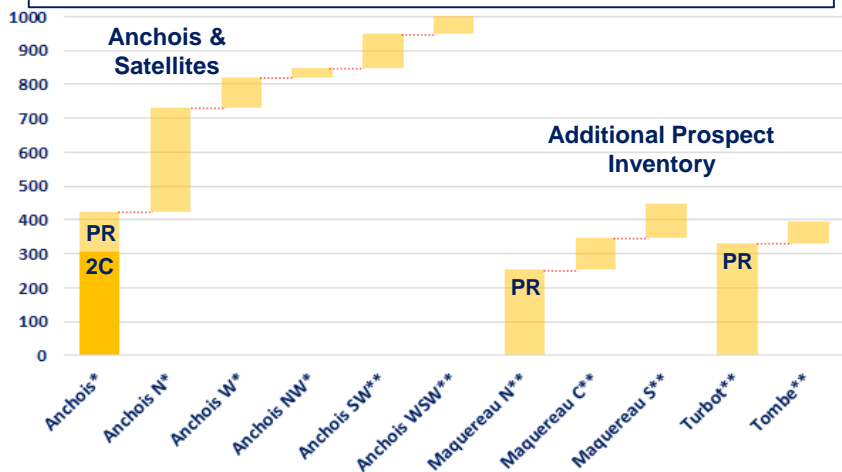
## Key Facts:

- All on-block discoveries exhibit AVO anomalies, all dry wells have no anomalies
- AVO conditioned products only currently available over the 2006 3D seismic surveys
- Anchois & satellites are an amplitude-supported discovery and prospect inventory with remaining recoverable resources of **>1 Tcf\***
- Additional On-Block Inventory PR **>850 Bcf\*\***

## Exploration Programme:

- 3D reprocessing, AVO and quantitative interpretation
- Contingent exploration well for potential Phase II tie-back development, subject to partnering

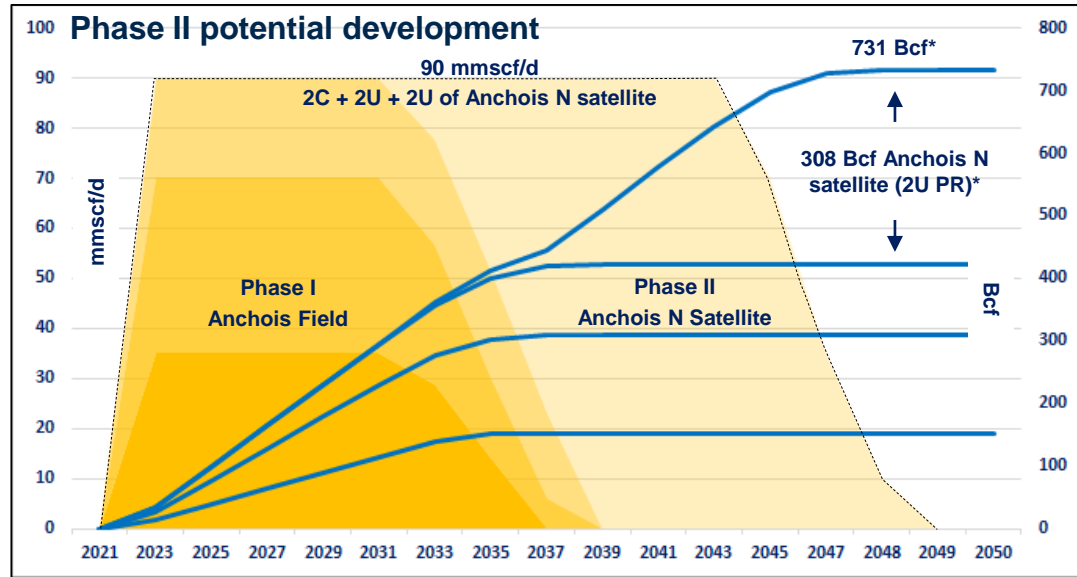
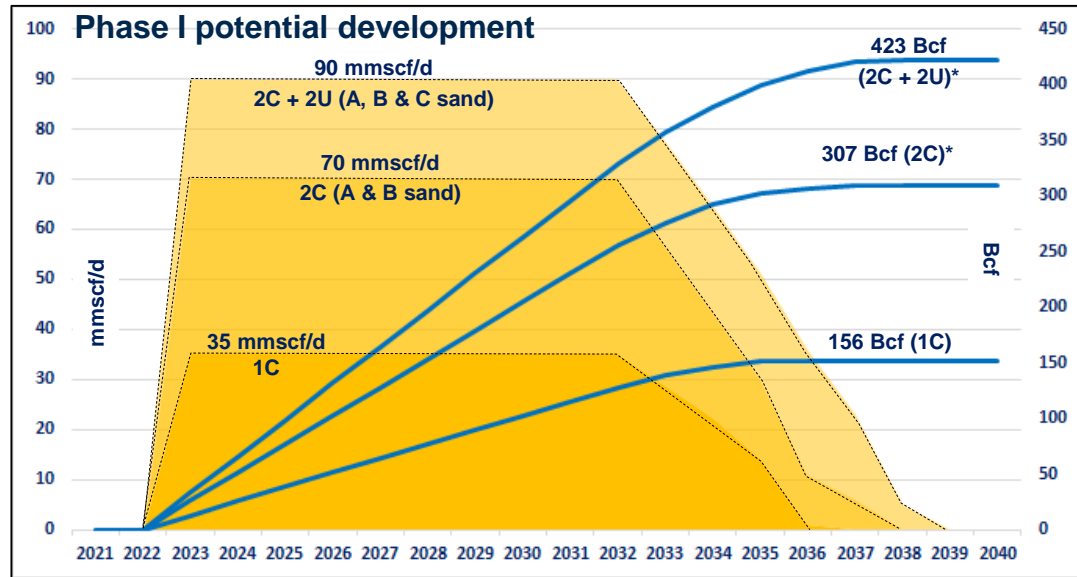
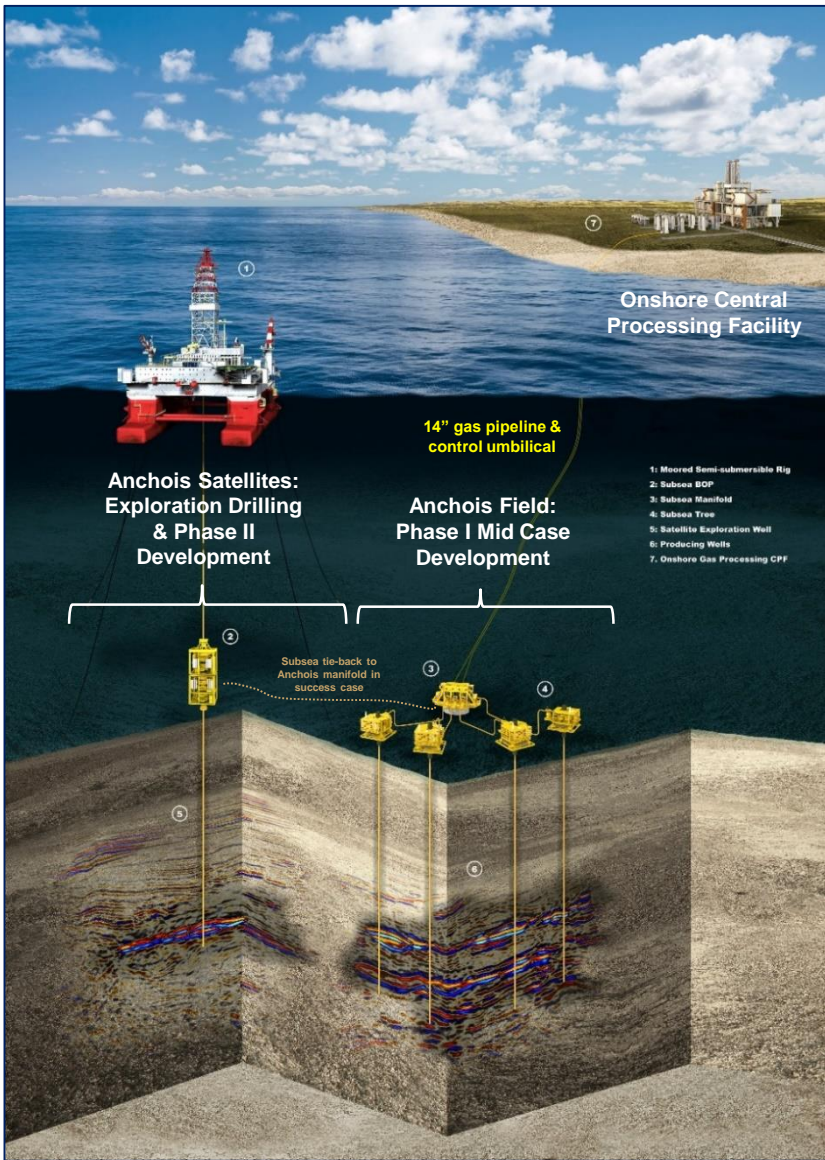
2C Resource and Prospective Resource (PR) of Anchois\*, Anchois satellites\* and the additional Prospect Inventory\*\* (Bcf)



\* Netherland Sewell and Associates Inc. ("NSAI") estimate of Gross 2C Resources or unrisked 2U Prospective Resources

\*\*Chariot Internal Estimate of 2U Prospective Resources or Remaining Recoverable Resources

# Strong value generation from Anchois & Satellites

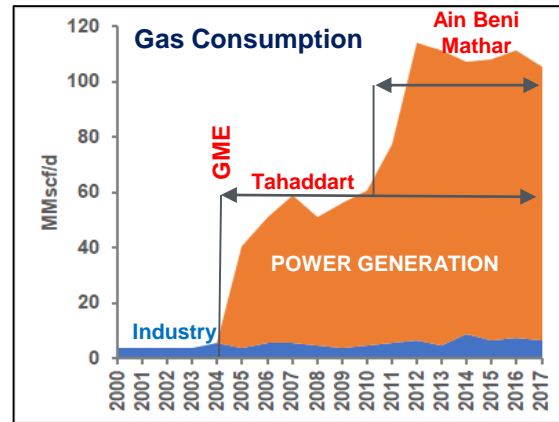
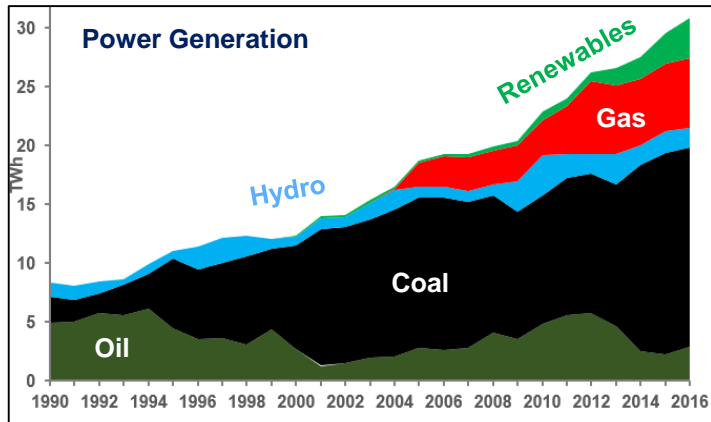
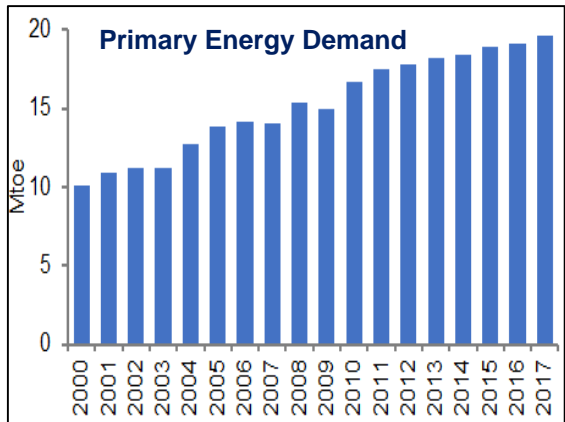
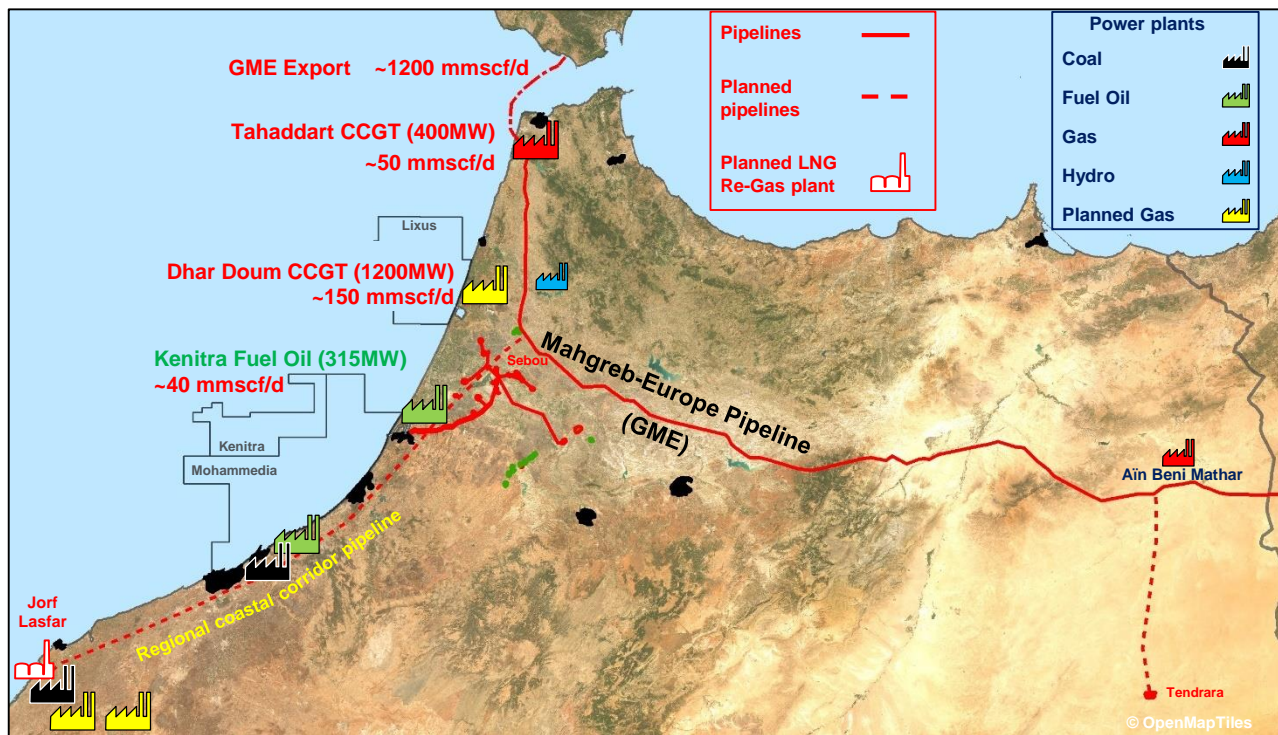


\* Netherland Sewell and Associates Inc. ("NSAI") estimate of Gross 2C Resources and unrisks Gross 2U Prospective Resources



# Growing Moroccan Gas Market with attractive gas prices

- Moroccan energy demand is forecast to double between 2015 and 2030
- Moroccan power generation is principally from imported coal, fuel oil and gas
- Ministry of Energy focus is security of supply; access to energy at low cost and minimizing the impact on the environment
- Supportive government with a desire to utilize indigenous gas vs. imported fossil fuels - 2018 petroleum imports expected to be ~\$6.6Bn
- \$8.50 - \$9/mcf expected gas price to power sector (linked to \$70 - \$75/bbl Brent) sets a very attractive local gas price

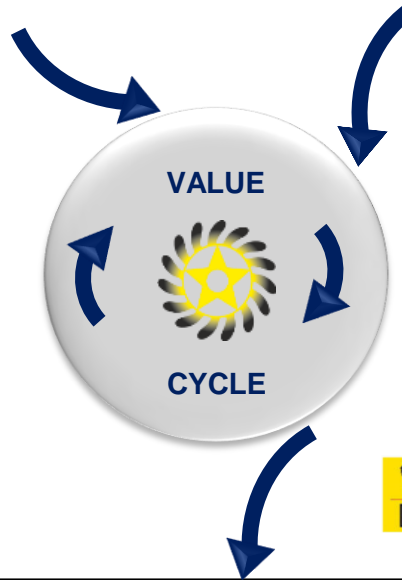


## ACCESS

- ☼ Secure large acreage positions in new and emerging basins ✓
- ☼ Take operated position in the early phases to maintain control over destiny ✓
- ☼ Build a diversity of basins and plays ✓
- ☼ Retain broad portfolio and risk profile ✓

## RISK MANAGEMENT









- ☼ Apply risk reduction technologies ✓
- ☼ Levered partnering at investment phases ✓
- ☼ Position the portfolio as a Fast Follower ✓
- ☼ Maintain portfolio diversity & management ✓
- ☼ Maintain strict Capital Discipline ✓



## DELIVERY

- ☼ Build a drill-ready inventory with the potential for transformational value:
  - ☼ 1 drill-ready prospect in Brazil ✓
  - ☼ Drill-ready portfolio of prospects in Morocco ✓
  - ☼ Morocco appraisal drilling programme in preparation
- ☼ Accelerate the drilling programme: MOH-B Q1 2020\*; Anchois appraisal 2020\*; Brazil drilling 2021\*
- ☼ Return transformational shareholder value by the early monetisation of discoveries


\* Subject to partnering

Country	Licence	2H 2019	1H 2020	2H 2020	1H 2021	2H 2021
MOROCCO	Mohammedia 75%	Well Partnering	Drilling*  MOH-B 637mmbbls***			
	Lixus 75%	Seismic reprocessing 	Drilling*  Anchois-2 Appraisal well 423Bcf***			Drilling**  Lixus Phase II exploration well
	Kenitra 75%	Partnering			Drilling**  Kenitra-1 445mmbbls***	
BRAZIL No remaining commitments	BAR-M-292/3 BAR-M-313/4 100%	Well Partnering			Drilling**  Prospect 1 911mmbbls***	
NAMIBIA No remaining commitments	Central Blocks PEL 71 2312 & 2412A 65%	Post-well evaluation		Well Partnering		Drilling*  Prospect V 339mmbbls***
New Ventures	100%	Evaluation of New Venture Opportunities 				

# Experienced and Operationally Excellent Team




**CEO**  
**Larry Bottomley**  
Formerly at BP, Perenco, Hunt Oil and Triton Energy




**Drilling  
Manager**  
**David Brecknock**  
Formerly at Ophir, Perenco, Devon, Shell and BG




**CFO**  
**Julian Maurice-Williams**  
Formerly at BDO



**Exploration  
Manager**  
**Duncan Wallace**  
Formerly at Perenco



**Commercial  
Manager**  
**Alex Green**  
Formerly at Paladin and BG



**Chief  
Geoscientist**  
**Julia Kemper**  
Formerly at Shell, BP, and Hunt Oil



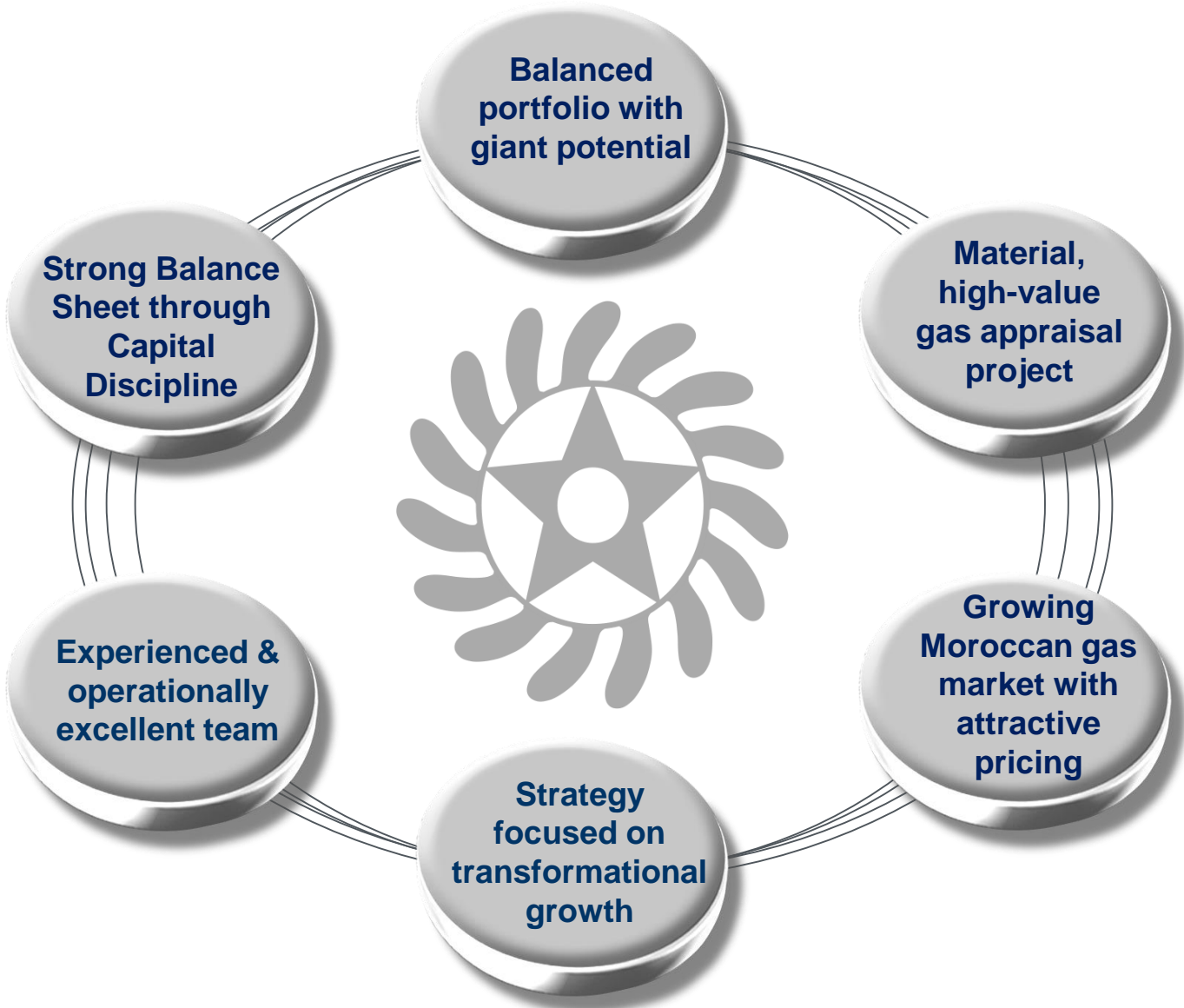
**Financial  
Controller**  
**Paul Breden**  
Formerly at Deloitte and E.ON



Non-operated zero-cost well



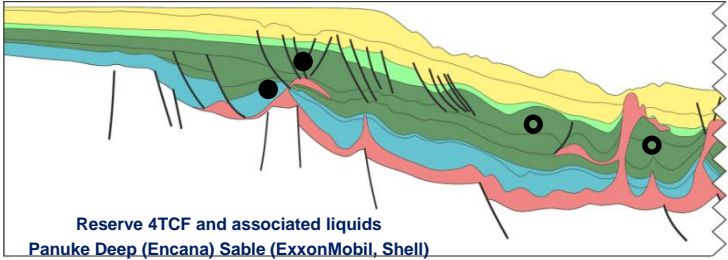
Operated well setting new industry benchmark for deepwater drilling



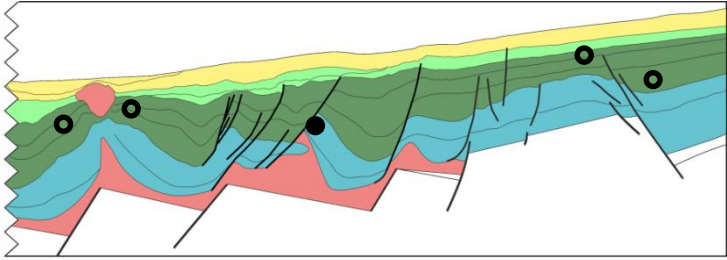




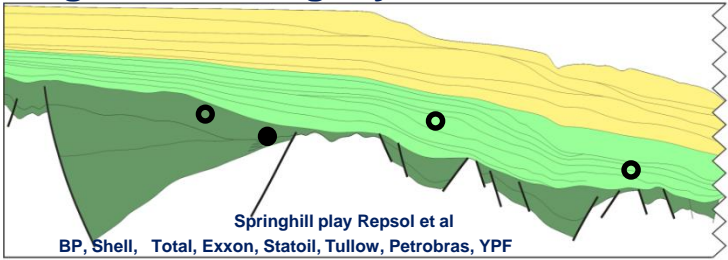
## Nova Scotia



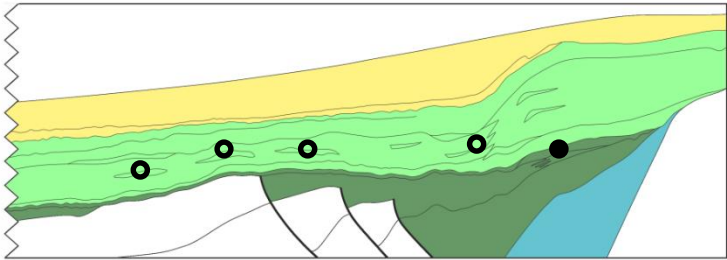
## Morocco



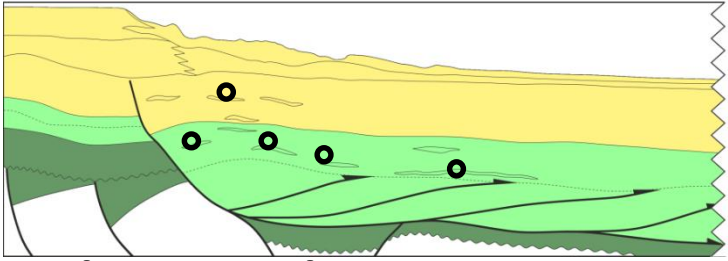
## Argentina / Uruguay



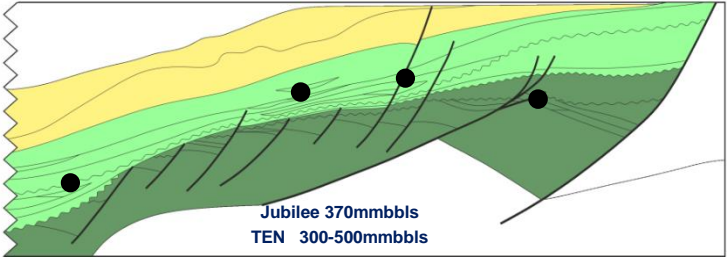
## Namibia



## Brazil Barreirinhas



## Ghana



● Discoveries    ○ Exploration targets

## Ownership:

- ☀ Lixus 75% (Op.); ONHYM 25%
- ☀ Kenitra 75% (Op.); ONHYM 25%
- ☀ Mohammedia 75% (Op.); ONHYM 25%

## Recent Chariot Activity:

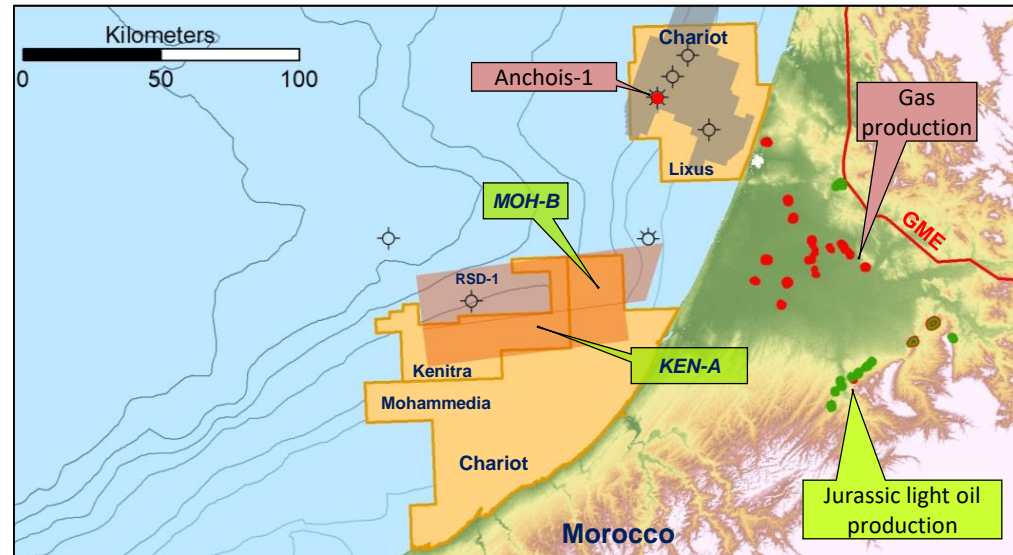
- ☀ Zero-cost in the Rabat Deep 1 (RSD-1) dry well having achieved a full carry from Eni
- ☀ Completed CPR of the Anchois discovery and new prospects in Lixus and refined prospective resource estimates over Mohammedia and Kenitra

## RSD-1 Well results:

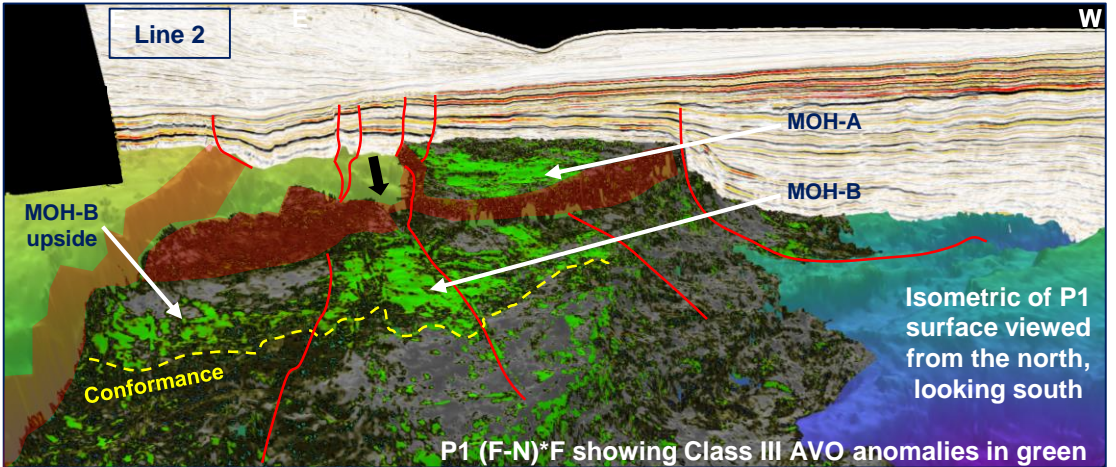
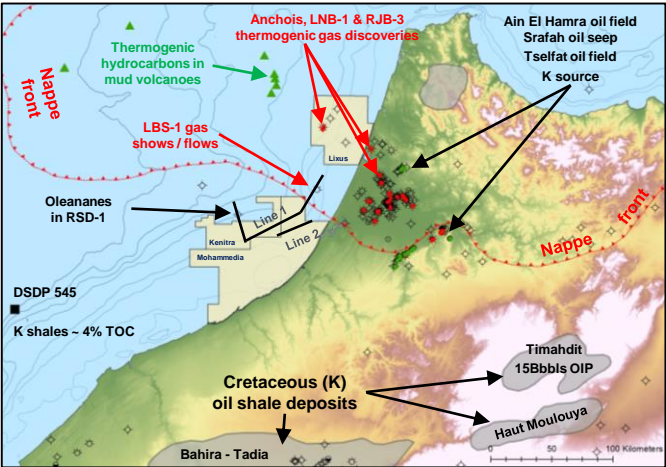
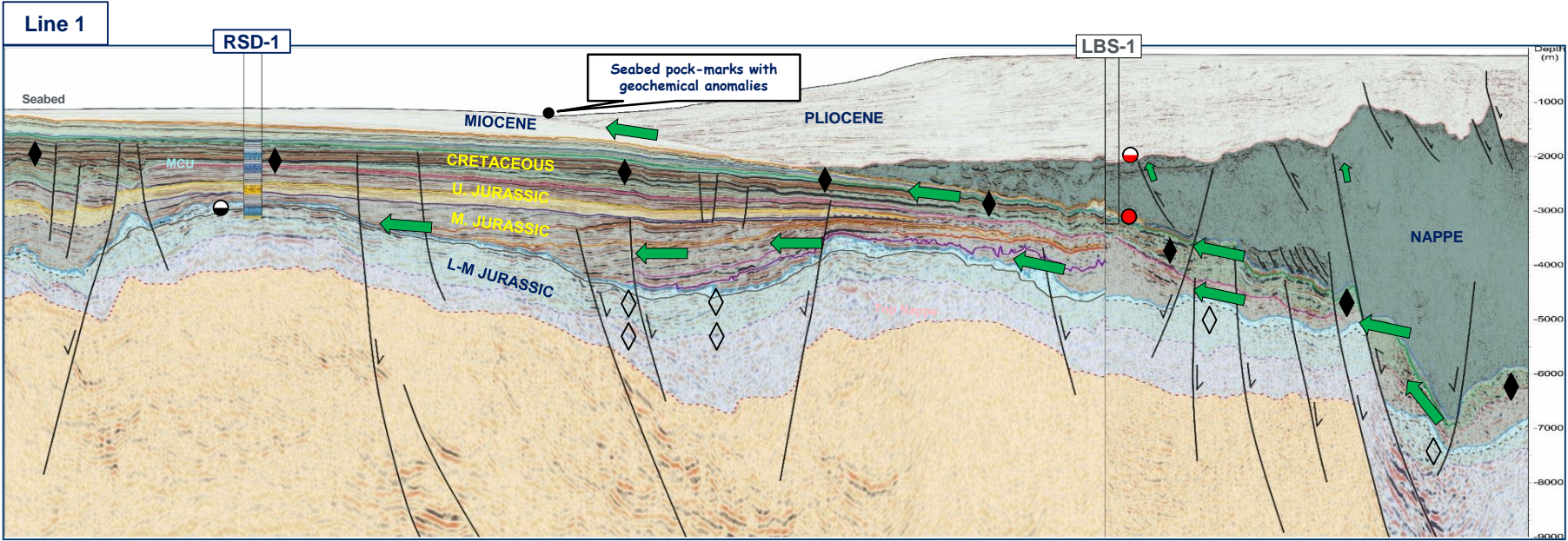
- ☀ Middle Jurassic carbonates were tight with minor oil and gas shows
- ☀ Geochemistry indicates the potential for a re-discovered petroleum system with hydrocarbon migration from a Cretaceous or younger source rock
- ☀ Upper Jurassic reservoir quality sandstones and effective seal encountered which supports the key play elements of the prospects in Mohammedia and Kenitra

## Chariot Planned Activity 2019/2020:

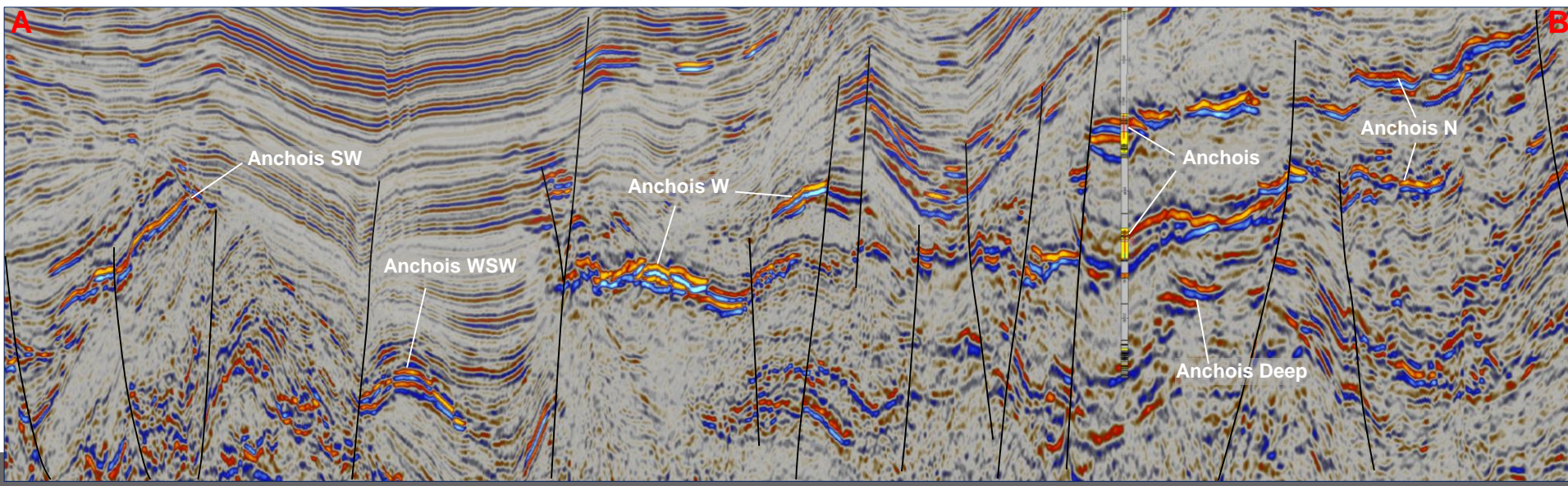
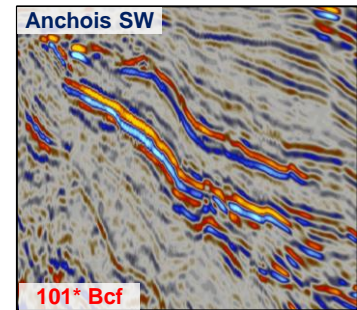
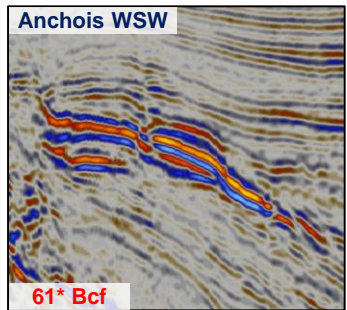
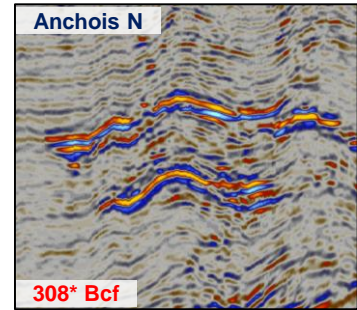
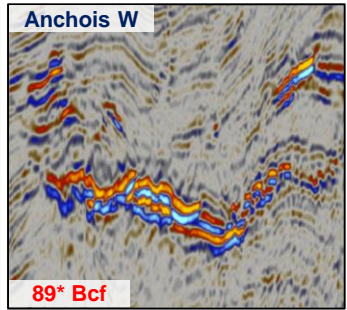
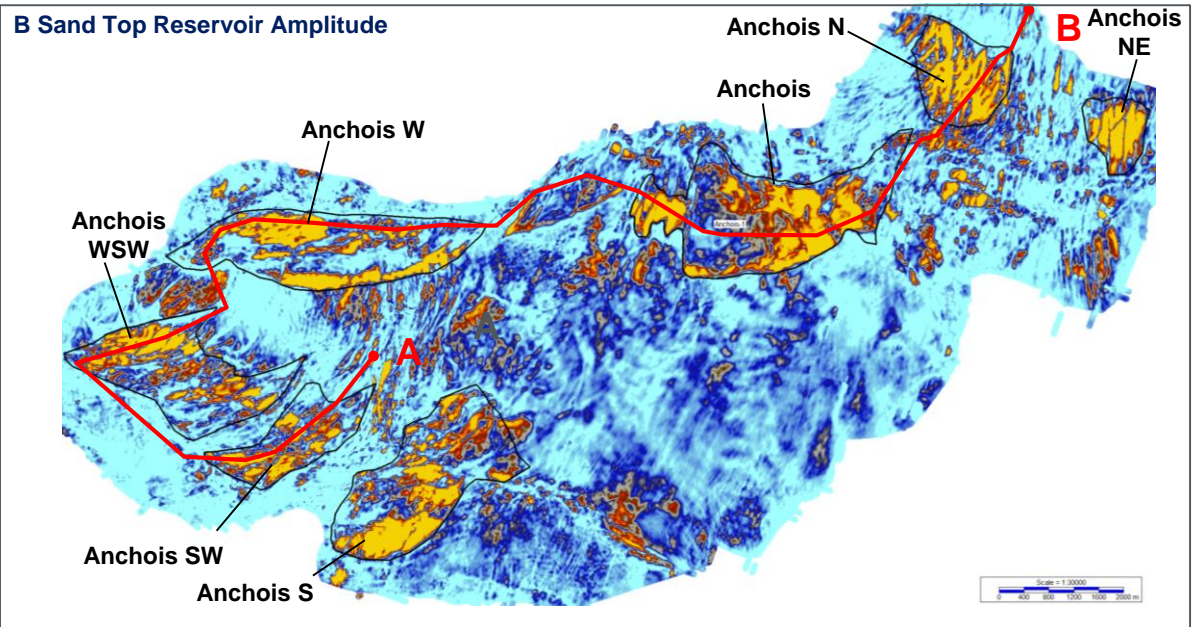
- ☀ Drill *MOH-B*\*\* (Mohammedia), with *KEN-A*\*\*\* (Kenitra) back-to-back subject to partnering:
  - ☀ *MOH-B 637mmbbls*\* is an attribute supported, 3-way dip and fault closed prospect in 400m WD targeting Upper Jurassic deltaic clastics and described by the 3D seismic programme acquired in 2017
  - ☀ *KEN-A 445mmbbls*\* is an attribute supported, Upper Jurassic clastic prospect in 750m WD defined by the 3D seismic programme acquired in 2017
- ☀ Potentially drill *Anchois-2*\*\* appraisal well (Lixus), subject to partnering and off-taker requirements, to be suspended as a potential future producer





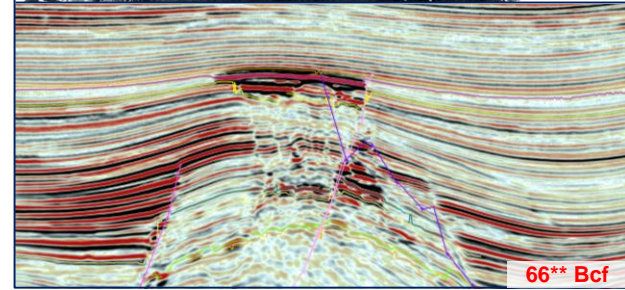
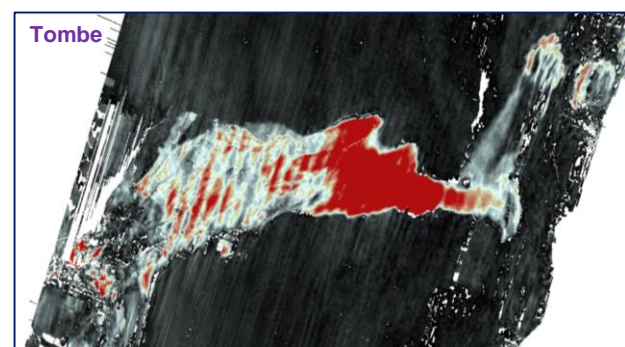
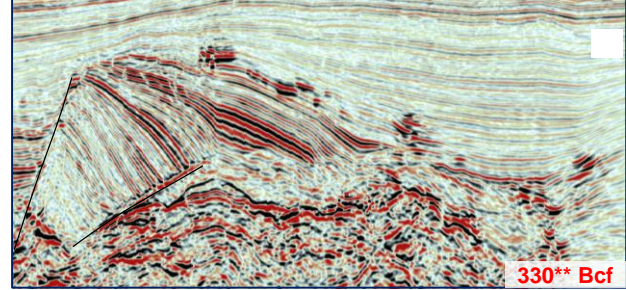
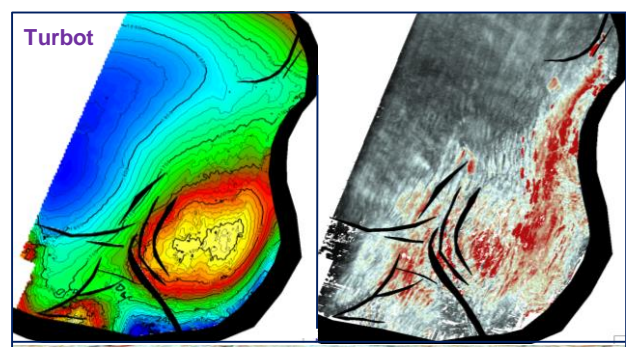
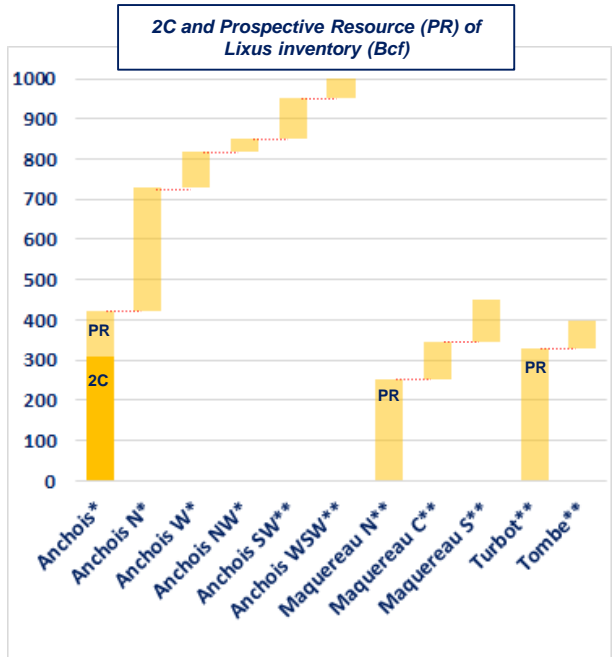
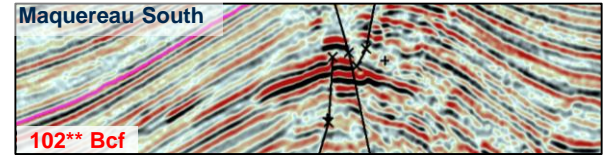
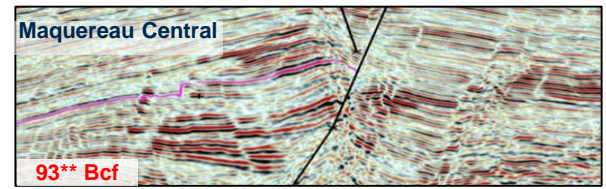
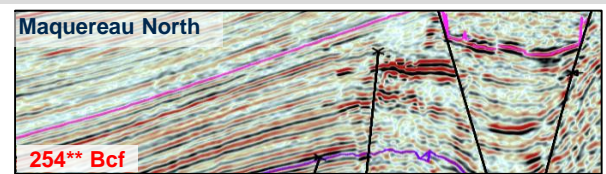
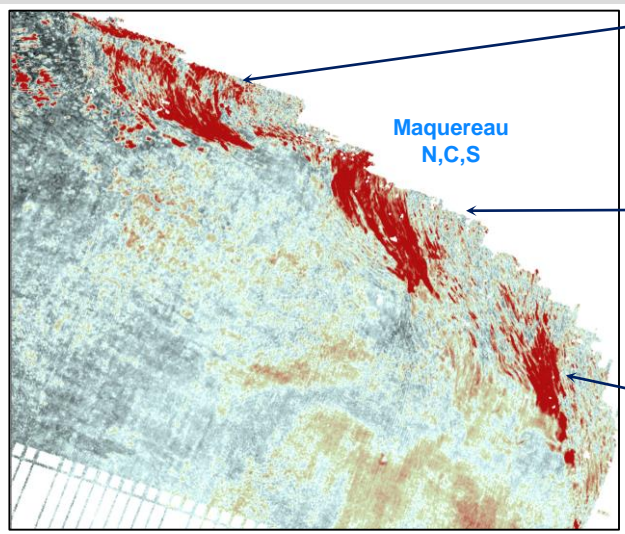
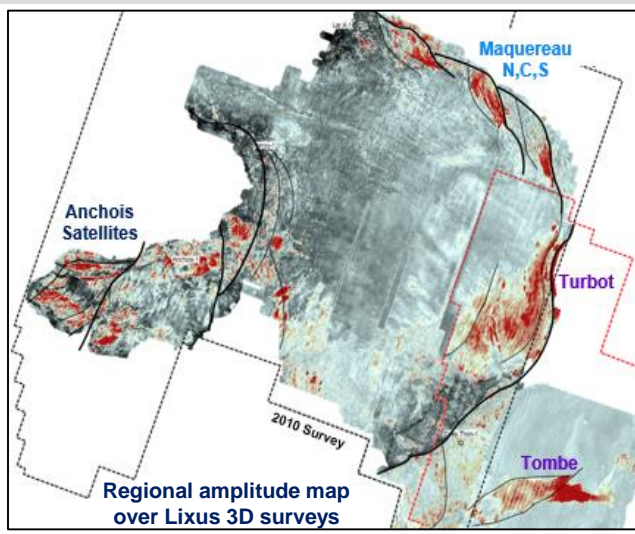


# Lixus – Anchois Satellite Prospects



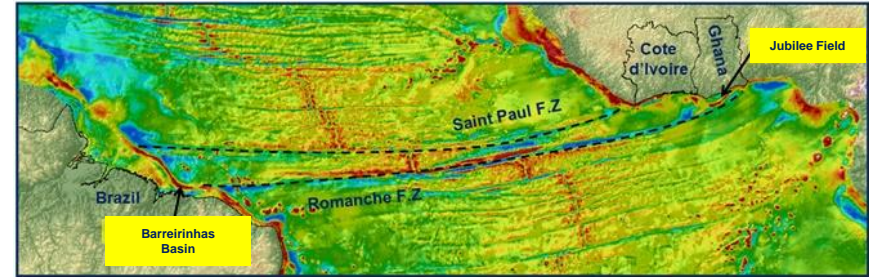
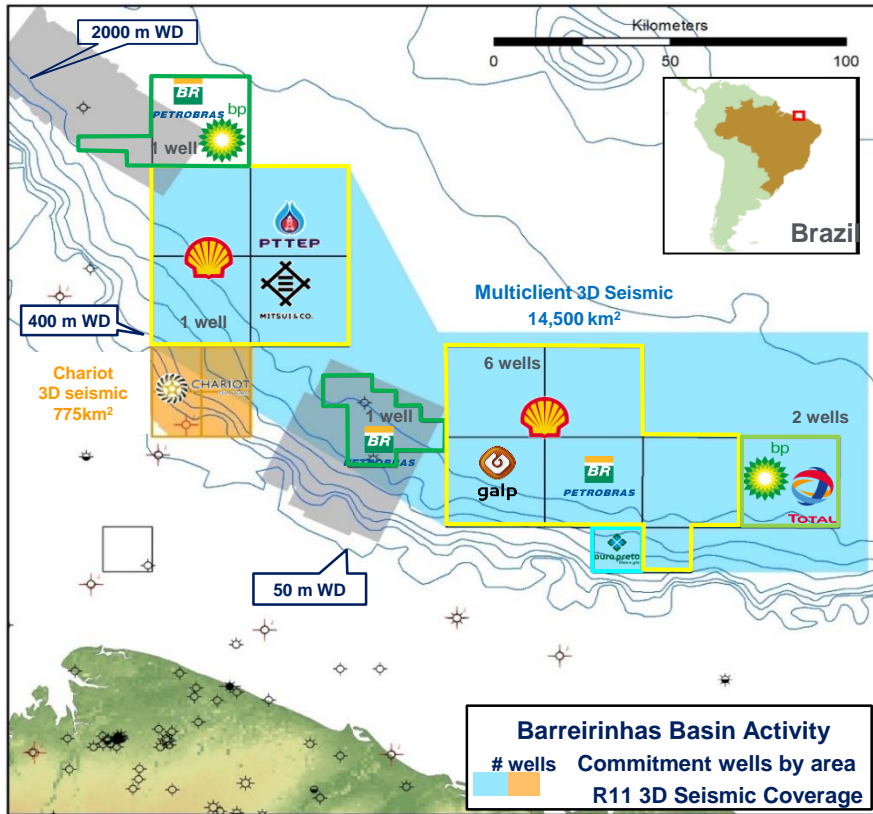
\* Netherland Sewell and Associates Inc. ("NSAI") estimate of 2U Prospective Resources

# Morocco Portfolio – Lixus – Additional prospects



\* Netherland Sewell and Associates Inc. ("NSAI") estimate of 2C Resources or 2U Prospective Resources

\*\*Chariot Internal Estimate of 2U Prospective Resources



## Ownership:

- ☀️ BAR-M-292, 293, 313, 314; 100% (Operator)

## Recent Chariot Activity:

- ☀️ Identified large structural prospect with multiple stacked targets from proprietary 3D seismic
- ☀️ 7 stacked reservoir targets including drape over a 200km<sup>2</sup> 4-way dip-closed structure, with individual prospective resource ranging up to **366mmbbls\***
- ☀️ Single well in Prospect 1 can penetrate **911mmbbls\*** of prospective resource in TP-1, TP-3 and KP-3 targets

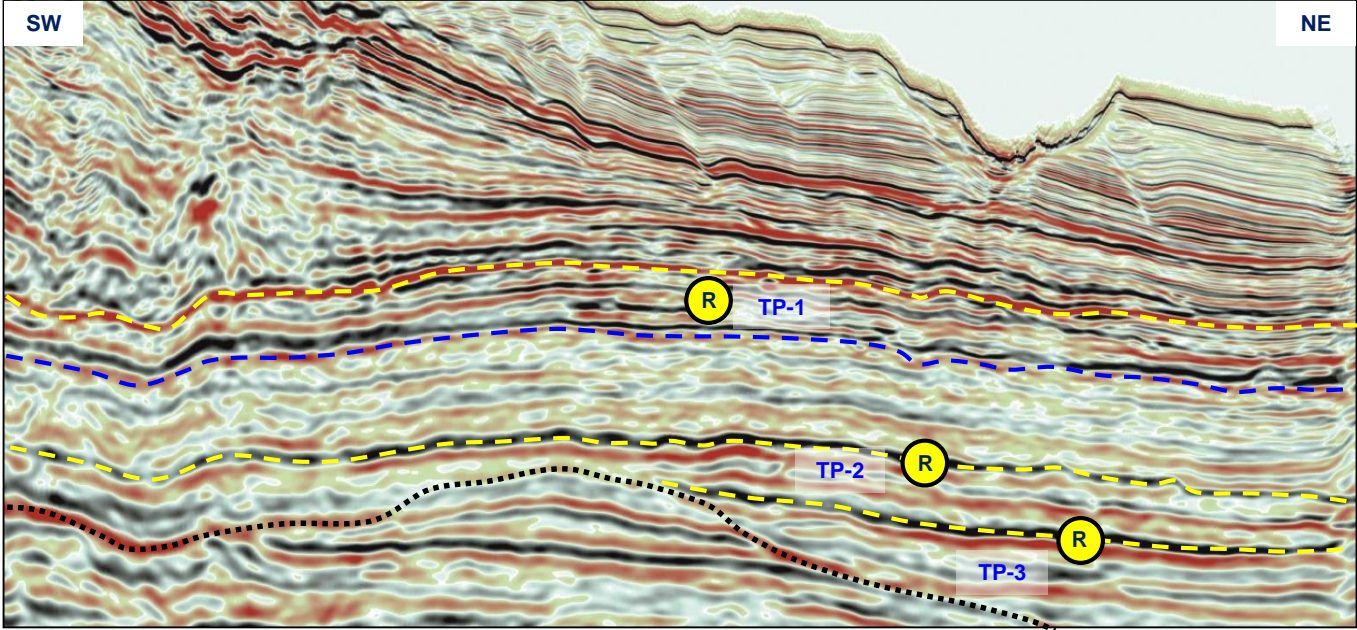
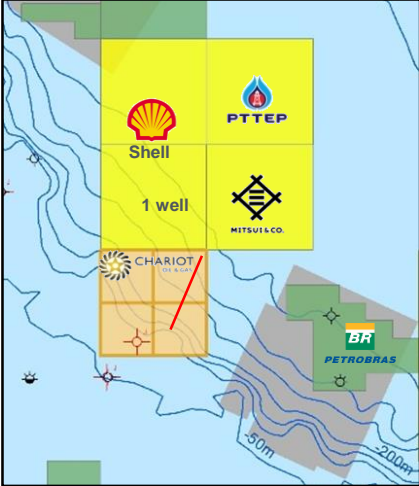
## Industry Activity:

- ☀️ 11 deepwater commitment wells to be drilled in the basin.
- ☀️ 1 well committed in the block north of Chariot's acreage.

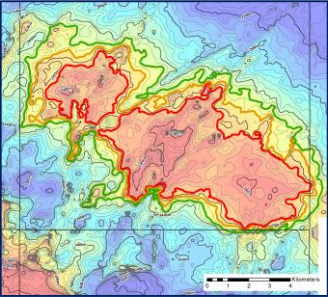
## Chariot Planned Activity in 2019:

- ☀️ Partnering process initiated for a partner to join in drilling to follow a play opening commitment well to be drilled by a third-party in the neighbouring deepwater block

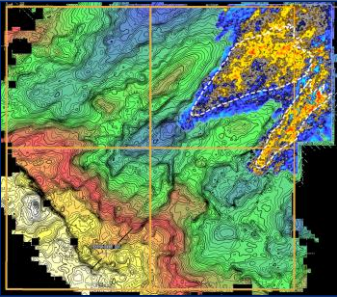
\* NSAI estimate of On-Licence sum of the Gross Mean Prospective Resource



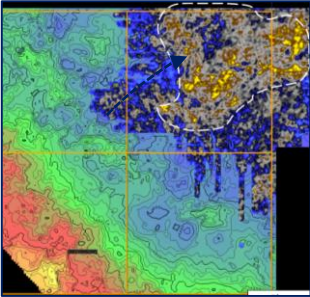
- All petroleum play elements proven by nearby drilling
- Shallow water wells in the basin have encountered excellent quality, oil-prone source rocks modelled to be oil mature in the fetch area for Chariot's targets
- Excellent quality Tertiary and Upper Cretaceous turbidite reservoir rocks encountered in nearby deepwater well with good porosity and permeability.
- TP-1, TP-3 and KP-3 can be penetrated by a single well



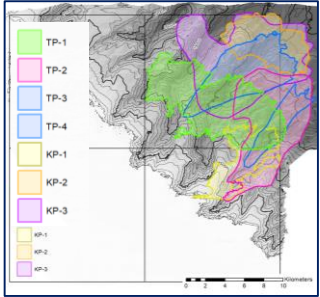
TP-1 – 366mmbbls\*



TP-3 – 344mmbbls\*



KP-3 – 201mmbbls\*



Targets

\* NSAI estimate of On-Licence Gross Mean Prospective Resources

## Ownership:

- ☀ PEL 71 Central Blocks: 65% (Op.); Azinam 20%; NAMCOR 10%; BEE 5%
- ☀ PEL 67 & 72 Southern Blocks: Post-drilling 10% back-in option at no cost

## Recent Chariot Activity:

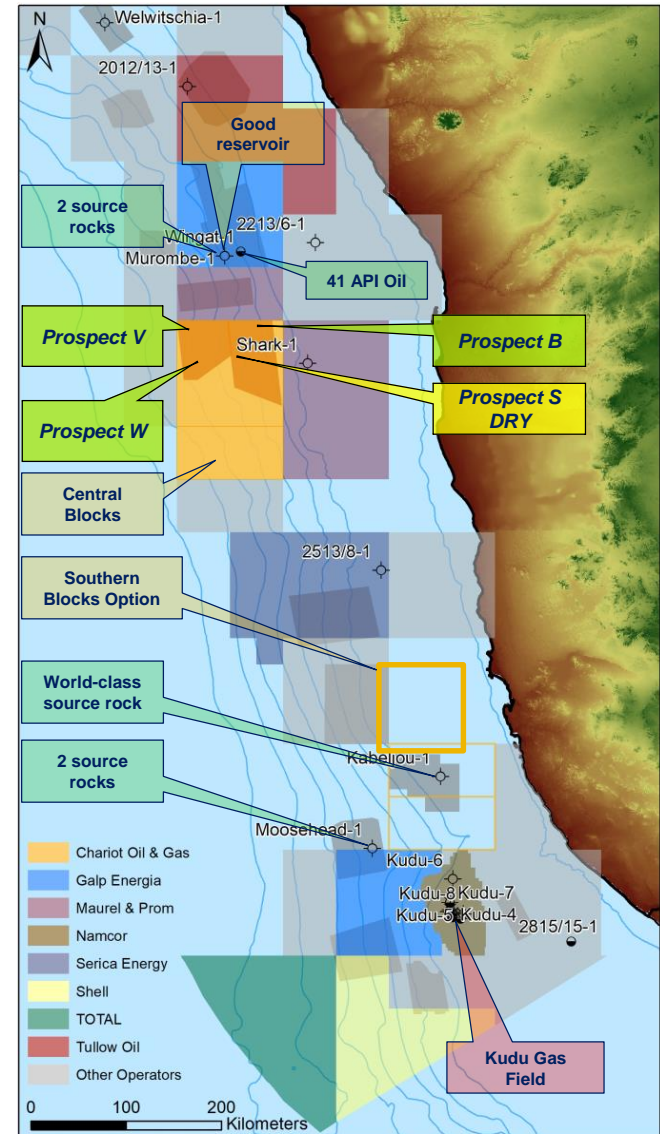
- ☀ Chariot safely operated the drilling of the deepwater well on Prospect S in Q4, 2018 using the Ocean Rig Poseidon
- ☀ The well was dry, encountering stacked water-bearing turbidite reservoirs
- ☀ The well was drilled for \$16m gross, approximately \$10m under budget, which is likely to become the new benchmark for the sector

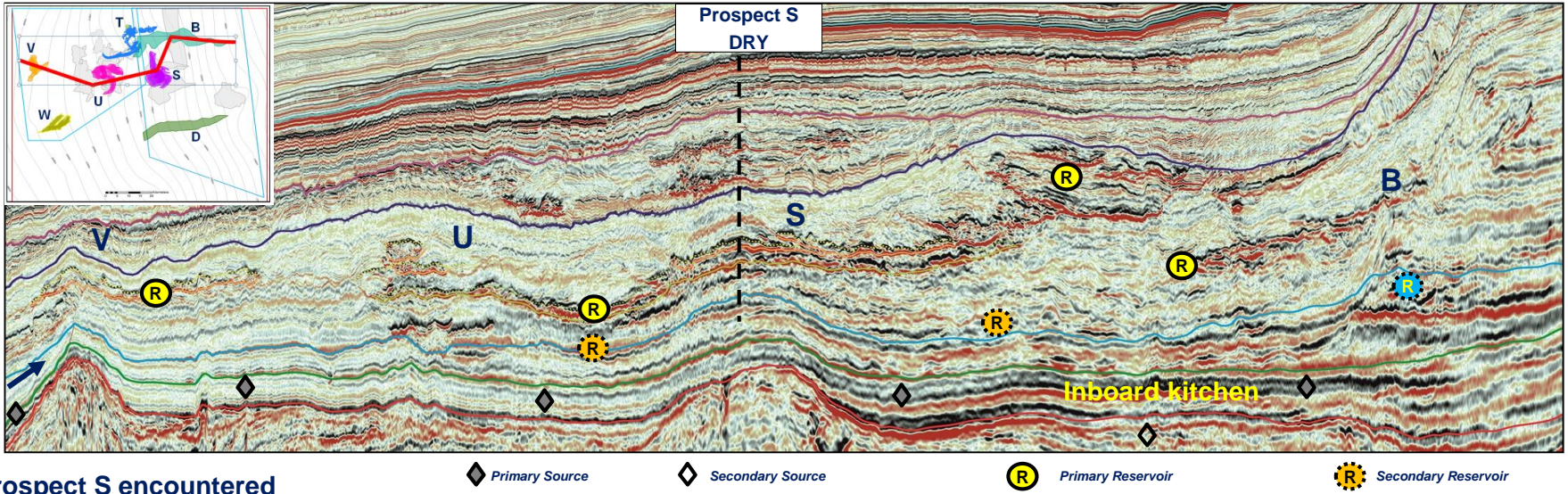
## Chariot Planned Activity in 2019/2020:

- ☀ Post-well analysis of logs, samples and cuttings for failure analysis and to determine the implications of the well results on the prospectivity of the remaining prospect inventory
- ☀ Continue to support NAMCOR on the marketing of the Southern Blocks in fulfilment of the back-in option

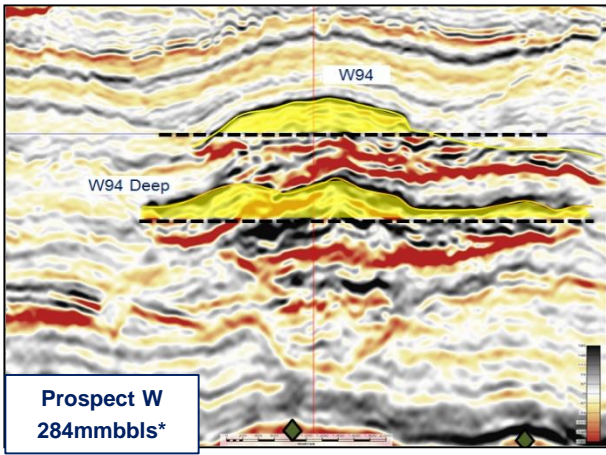
## Industry Activity:

- ☀ ~3 wells in 2019 – 2020, with a well in the adjacent block planned for 2020

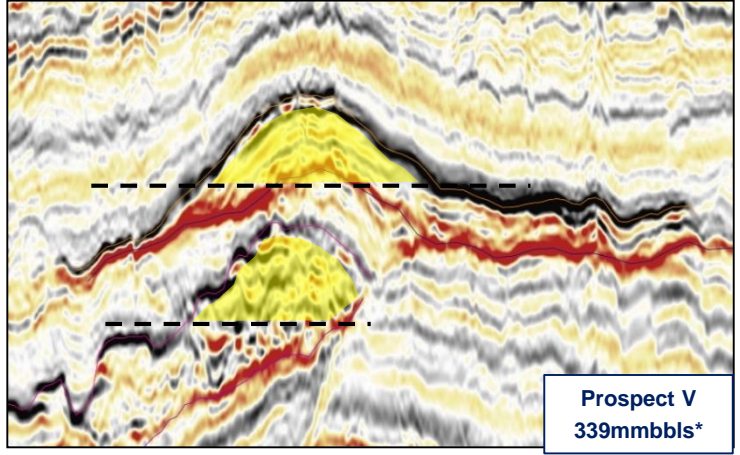




- Prospect S encountered water bearing turbidite reservoir sands
- Post-well analysis underway as part of the well failure analysis
- Integration of all wells to understand implications for the remaining inventory in acreage that extends to 16,800 km<sup>2</sup>
- All petroleum play elements proven by nearby drilling.
- Note that Prospects V & W access an outboard source kitchen, different to the inboard kitchen postulated for Prospect S



Prospect W  
284mmbbls\*



Prospect V  
339mmbbls\*

- A well in the adjacent block, on trend with Prospects V & W, is planned for 2020

\* NSAI estimate of Gross Mean Prospective Resources







## CEO

**Larry Bottomley**

Over 35 years with Perenco, Hunt Oil, Triton Energy and BP with a track record of building exploration and production businesses on the international stage.

Strong background in integrated geoscience, managing teams, building relationships with partners, governments and host agencies, delivering work programmes and creative commercial solutions, and discovering and developing giants.



## Non-Executive Chairman

**George Canjar**

Over 35 years with Hess, Shell and Davis Petroleum supervising exploration & seismic operations; deep offshore W. Africa and the Gulf of Mexico.

Broad experience in the E&P sector and specific expertise in deal structuring, portfolio development, risk analysis, strategic modelling as well as a variety of corporate activity.

Currently Executive Vice President of New Ventures for Carrizo Oil and Gas.



## Non-Executive Director

**Andrew Hockey**

Over 35 years' experience in the oil & gas industry, with specific expertise in the development and production of gas assets in the UKCS sector.

Founder & NED of Fairfield Energy Ltd and previous experience with Eni, Fina, LASMO, Triton Energy and Monument.

Currently CEO of Independent Oil & Gas, a UK-based Development and Production Operator with assets in the Southern North Sea gas basin.



## Non-Executive Director

**Adonis Pouroulis**

Extensive experience in the mining sector, primarily on the African continent with expertise in the discovery, exploration and production of natural resources.

Founded and listed Petra Diamonds (LSE: PDL) in 1997 – a FTSE 250 company and one of the largest independent diamond producers in Africa today.

Co-founder of Chariot and a founder of Pella Resources



## Non-Executive Director

**Robert Sinclair**

Managing Director of Artemis Trustees Limited, a Guernsey-based fiduciary services group.

Over 45 years' experience in finance and accountancy, of which over 39 have been spent in the Guernsey financial services industry.

Extensive experience of offshore trusts and corporate entities and financial planning for both individuals and corporations.



## Non-Executive Director

**Chris Zeal**

Over 30 years' experience in the across a wide range of sectors, and retained by over 20 FTSE100 companies including British Gas, Cairn Energy and Tullow Oil.

Previously Managing Director at Jefferies Hoare Govett ( a division of Jefferies Inc.) specialising in corporate broking and investment banking.

Director at Ventus VCT plc, a company invested in renewable energy Companies in the UK.

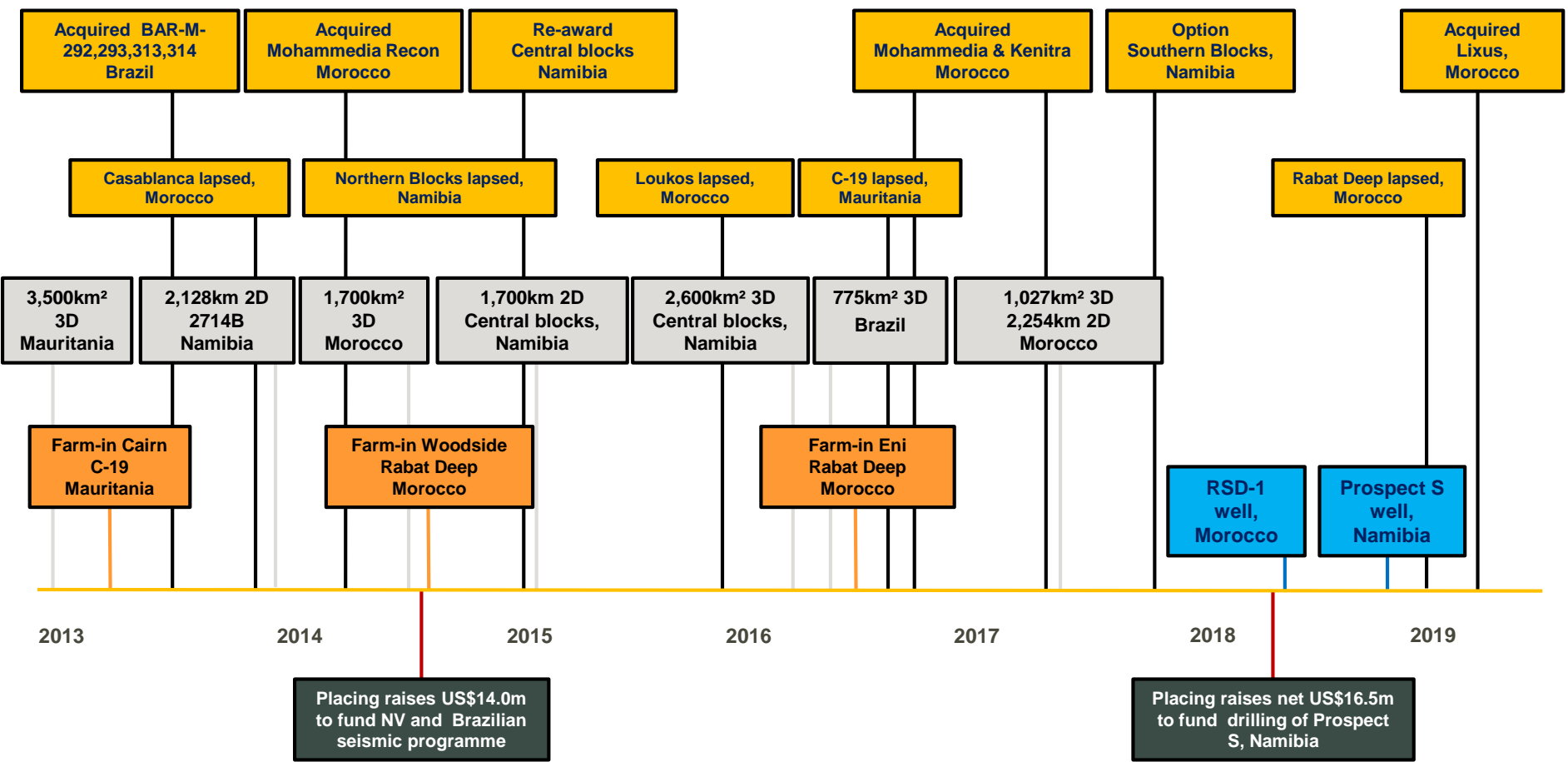
## Key Shareholders

Shareholders*	%
<b>Total Board &amp; Senior Management</b>	8.2
<i>Including Westward Investments Limited (A Pouroulis - Director &amp; Founder)</i>	7.8
<b>YF Finance</b>	7.0
<b>Protech Namibia (Pty) Limited (H Ndume – Founder)</b>	5.5

\*Figures as per latest Orient share holding analysis (31.12.2018)

## Market Statistics

<b>Listing</b>	AIM, London
<b>Ticker Symbol</b>	CHAR
<b>Issued Shares (at 31 December 2018)</b>	367,259,909
<b>Share Price (at 31 December 2018)</b>	2.55p
<b>Market Capitalisation (at 31 December 2018)</b>	~US\$11.9m
<b>Total Director / Employee share awards (at 31 December 2018)</b>	27,152,919



Chariot was founded in 2008 with an IPO on AIM raising US\$90m on a Namibia-focused exploration portfolio.

## MOROCCO:

GDP: US\$109.3 billion ; Annual Growth: 4.1%

Population: 34.3 million; Inflation: 0.8%

Major Industries: automotive parts; phosphate mining and processing; aerospace; food processing; leather goods; textiles; construction; energy; tourism

Major trading partners: Spain; France; USA; China

Constitutional monarchy; Robust economy; Good trade relations

Country risk profile: BBB-

## NAMIBIA:

GDP: US\$13.24 billion; Annual Growth: 3.9%

Population: 2.5 million; Inflation: 4.5%

Major Industries: meatpacking; fish processing; dairy products; beverages; mining (diamonds; lead; zinc; tin; silver; tungsten; uranium; copper)

Major trading partners: South Africa; South Korea; Botswana; Switzerland

Democracy; Good relations with neighbours; Encouraging international foreign investment

Country risk profile: BBB-

## BRAZIL:

GDP: US\$2.0 trillion; Annual Growth: 1%

Population: 208.8 million; Inflation: 4.5%

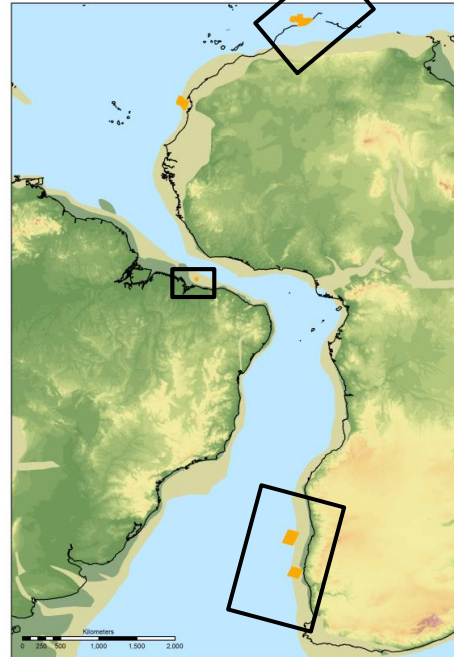
Major Industries: textiles; shoes; chemicals; cement; lumber; iron ore; tin; steel; aircraft; motor vehicles and parts; other machinery and equipment

Major trading partners: China; USA; Argentina; Netherlands

Democracy; Significant player in world markets; Diverse economy

Country risk profile: BB

## Atlantic Margins Explorer



South Atlantic 100 Ma Reconstruction

Sources: CIA World Factbook (2016/2017 estimates); FCO; Standard and Poor's; Fitch Group;

<http://globaleledge.msu.edu/countries/namibia/tradestats>

ONHYM presentation 2<sup>nd</sup> Morocco Oil & Gas Summit 2019

### Chariot Morocco:

#### Tax & Royalty:

- **10 year Corporation Tax Holiday on production**
- **Royalty: Oil 7-10%, Gas 3.5-5%**
- **31% Corporation Tax and CGT**
- **Tax & customs duties exemptions**

### Chariot Namibia:

#### Tax & Royalty:

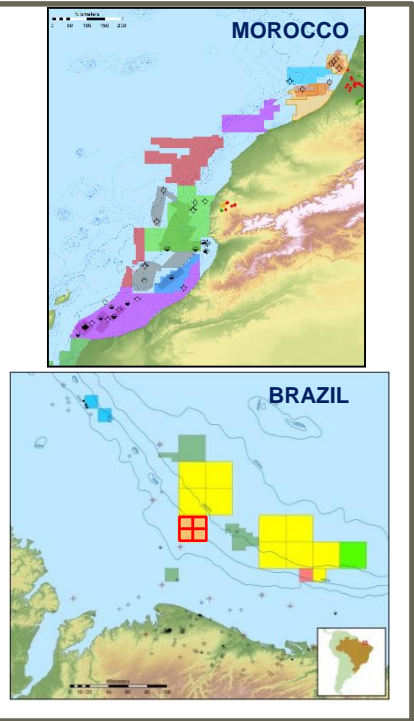
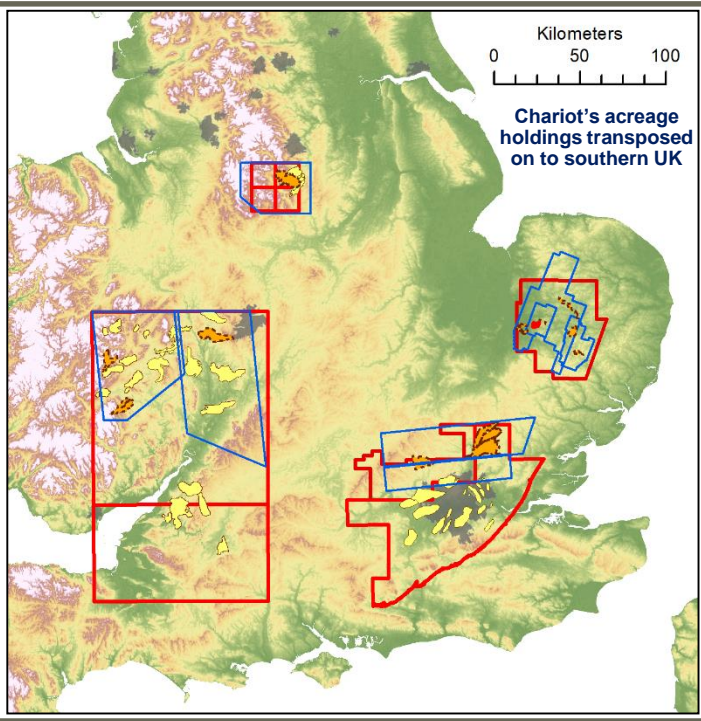
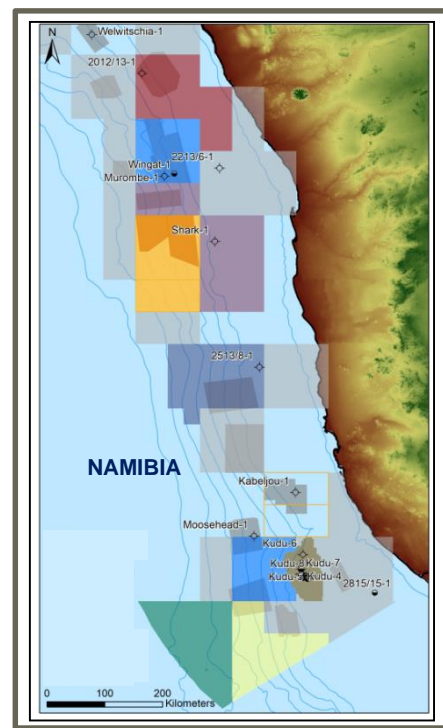
- **Royalty: 5%**
- **35% Corporation Tax and CGT**
- **25%- Additional Profits Tax when IRR >15% Cash flow after Corporation Tax**

### Chariot Brazil:

#### Tax & Royalty:

- **Royalty: 10%**
- **34% Corporate Income Tax and CGT**
- **~15% indirect value added taxes on Opex & Capex and other minor taxes and fees**
- **Special Participation Tax depending on water depth and production rates**

# Chariot Portfolio and our neighbours



Contract Area	Acquired	Working Interest	Approximate licence area (km <sup>2</sup> )	Operator	Ongoing commitments	Seismic database
<b>Morocco Offshore</b>						
Lixus	2019	75%	2,390	Chariot	Seismic reprocessing	950km 2D; 1425km <sup>2</sup> 3D
Kenitra	2017	75%	1,400	Chariot	None	710km <sup>2</sup> 3D
Mohammedia	2016	75%	4,654	Chariot	None	2245km 2D; 693km <sup>2</sup> 3D
<b>Namibia Offshore</b>						
Central Blocks	2014	65%	16,800	Chariot	None	4700km 2D; 6100km <sup>2</sup> 3D
<b>Brazil Offshore</b>						
BAR-M-292, 293, 313, 314	2013	100%	768	Chariot	None	775km <sup>2</sup> 3D

## Netherland Sewell and Associates Inc. ("NSAI")

### Morocco:

Block / Licence	Play	Field / Prospect	Unrisked Gross (100 percent)				Probability of Geologic Success (Pg)
			Contingent Gas resources* (BCF)		Prospective Gas resources (BCF)		
			1C*	2C*	3C*	Mean	
Lixus	Tertiary turbidite sands	Anchois A sand*	45	107	143	100	N/A
		Anchois B sand*	111	201	290	201	N/A
		Anchois CR*	156	307	433	301	
		Anchois Deep (C sand)	56	116	172	115	N/A
		Anchois (RRR <sup>1</sup> )	212	423	605	416	
		Anchois N	140	308	492	297	43%
		Anchois W	45	89	134	86	35%
		Anchois NW	10	29	51	28	34%
		Anchois SW	42	101	165	98	28%
		Anchois WSW	22	61	110	60	23%
		Maquereau N**	111	254	457	272	27%
		Maquereau C**	54	93	145	97	27%
		Maquereau S**	41	102	190	110	22%
		Tombe**	26	66	120	70	29%
		Turbot**	85	330	763	388	16%

### Brazil:

Block / Licence	Play	Prospect / Lead	On-Licence Unrisked Gross (100 percent)				Probability of Geologic Success (Pg)
			Prospective Oil resources (MMBBLs)				
			1U	2U	3U	Mean	
BAR-M-293 & BAR-M-314	Tertiary turbidite sands	TP-1	95	302	722	366	16%
		TP-2	74	236	517	290	16%
		TP-3	122	292	620	344	21%
	Cretaceous turbidite sands	TP-4	21	52	82	64	19%
		KP-1	10	29	67	35	17%
		KP-2	44	122	246	148	12%
		KP-3	61	169	356	201	15%
		Prospect 1 (RRR <sup>1</sup> ) (TP-1, TP-3 & KP-3)				911	

### Namibia:

Block / Licence	Play	Prospect / Lead	Unrisked Gross (100 percent)				Probability of Geologic Success (Pg)
			Prospective Oil resources (MMBBLs)				
			1U	2U	3U	Mean	
Mohammedia	M Jur Carbonate	JP-2	9	80	334	117	12%
		MOH-A	120	406	898	467	22%
	Upper Jurassic shallow water deltaic sands	MOH-B (P1)	73	199	426	229	20%
		MOH-B (P3/4)	121	349	778	408	20%
		MOH-B (RRR <sup>1</sup> )				637	
		MOH-C (P5)	53	137	292	158	18%
		MOH-C (P11)	90	246	525	284	20%
		MOH-C (RRR <sup>1</sup> )				442	
	Tertiary turbidite sands	EOP-1	13	37	100	45	11%
		EOP-2	7	23	63	28	15%
Kenitra	Upper Jurassic sands	KEN-A	128	380	846	445	19%
		KEN-B	116	380	876	448	18%

Block / Licence	Play	Prospect / Lead	Unrisked Gross (100 percent)				Probability of Geologic Success (Pg)
			Prospective Oil resources (MMBBLs)				
			1U	2U	3U	Mean	
Central Blocks	Upr Cret slope fan prospects	Prospect B	203	450	818	469	22%
		Prospect V	86	302	716	339	24%
	Upr Cret turbidites in 4-way dip closures	Prospect W	75	252	601	284	25%

All Contingent Resource ("CR") and Prospective Resource ("PR") estimates are gross and based on the evaluation of 3D seismic data RRR<sup>1</sup> Remaining Recoverable Resource